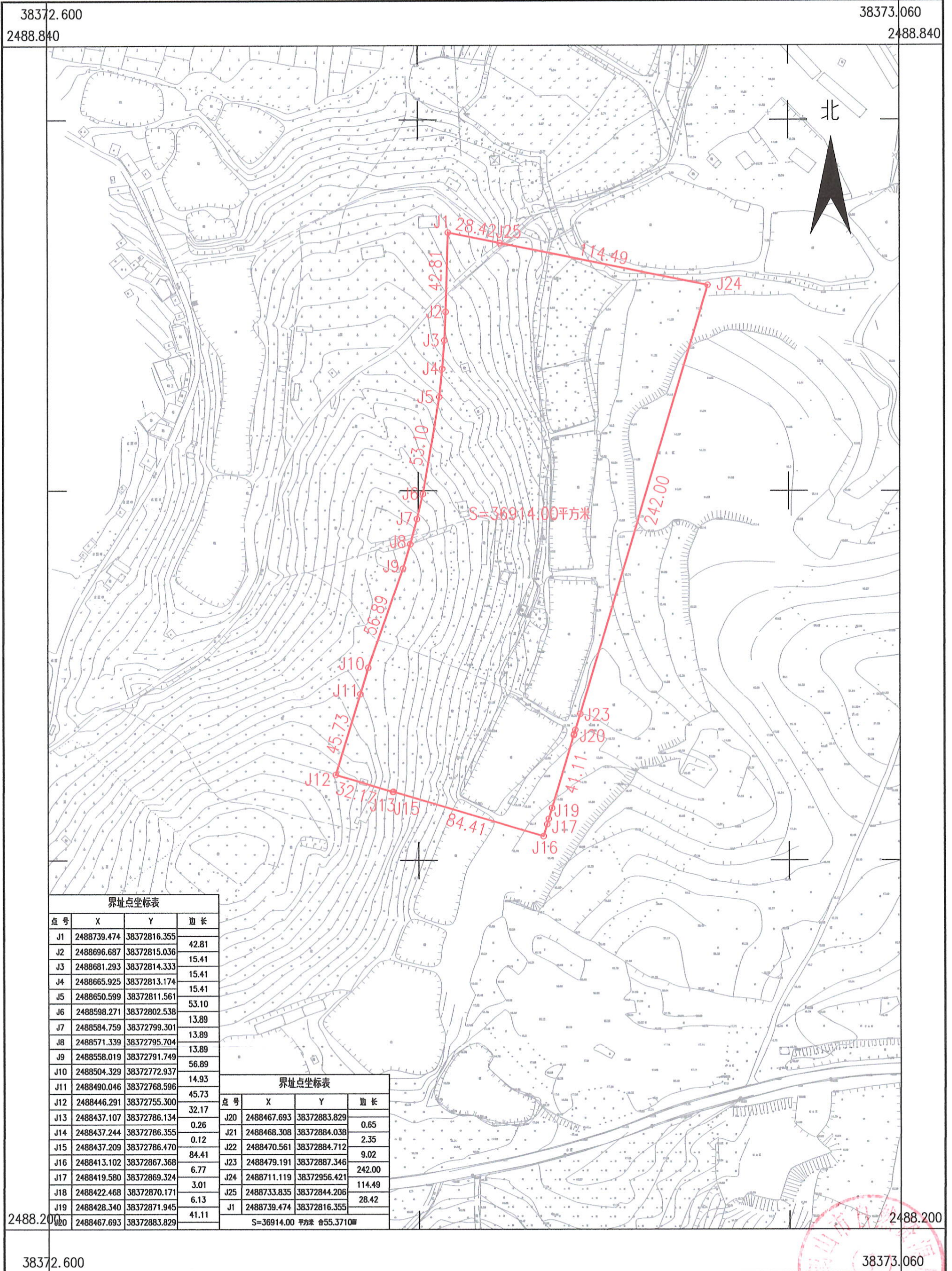


# 鹤山市2020年度第十九批次城镇建设用地图(ZS380)

鹤山市址山镇东溪开发区

单位: m.m<sup>2</sup>



界址点坐标表			
点号	X	Y	边长
J1	2488739.474	38372816.355	42.81
J2	2488696.687	38372815.036	15.41
J3	2488681.293	38372814.333	15.41
J4	2488665.925	38372813.174	15.41
J5	2488650.599	38372811.561	53.10
J6	2488598.271	38372802.538	13.89
J7	2488584.759	38372799.301	13.89
J8	2488571.339	38372795.704	13.89
J9	2488558.019	38372791.749	56.89
J10	2488504.329	38372772.937	14.93
J11	2488490.046	38372768.596	45.73
J12	2488446.291	38372755.300	32.17
J13	2488437.107	38372786.134	0.26
J14	2488437.244	38372786.355	0.12
J15	2488437.209	38372786.470	84.41
J16	2488413.102	38372867.368	6.77
J17	2488419.580	38372869.324	3.01
J18	2488422.468	38372870.171	6.13
J19	2488428.340	38372871.945	41.11
J20	2488467.693	38372883.829	0.65
J21	2488468.308	38372884.038	2.35
J22	2488470.561	38372884.712	9.02
J23	2488479.191	38372887.346	242.00
J24	2488711.119	38372956.421	114.49
J25	2488733.835	38372844.206	28.42
J1	2488739.474	38372816.355	28.42

界址点坐标表			
点号	X	Y	边长
J20	2488467.693	38372883.829	0.65
J21	2488468.308	38372884.038	2.35
J22	2488470.561	38372884.712	9.02
J23	2488479.191	38372887.346	242.00
J24	2488711.119	38372956.421	114.49
J25	2488733.835	38372844.206	28.42
J1	2488739.474	38372816.355	28.42

S=36914.00 平方米 合55.3710亩

鹤山市山水测绘有限公司