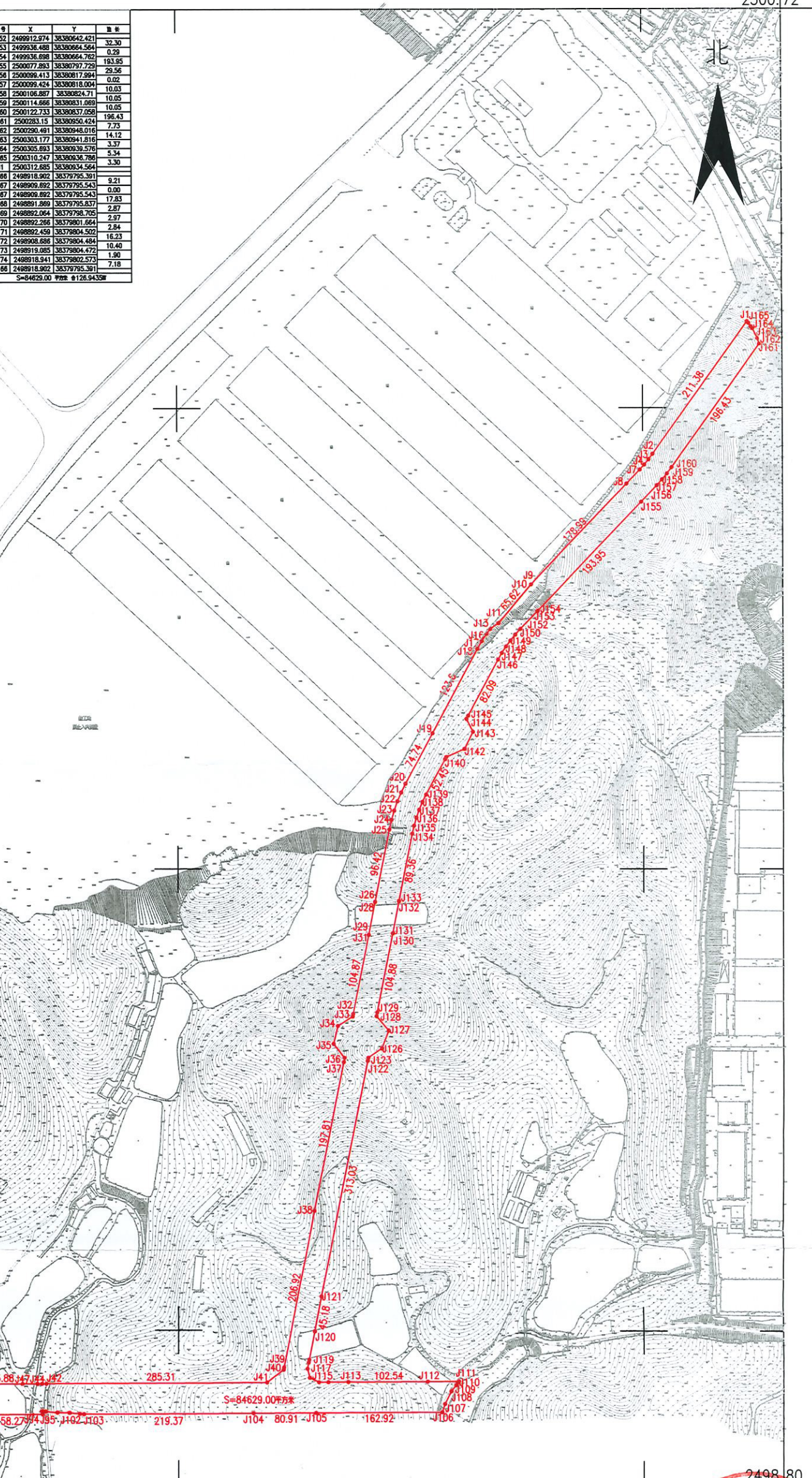


鹤山市鹤城镇东坑经济联合社征收土地红线图

单位: m.m²

8379.60 8380.98
2500.72 2500.72

界址点坐标表								
点号	X	Y	点号	X	Y	点号	X	Y
J1	250032.685	3838034.584	J77	248898.357	38379853.024	J153	2489912.974	38380642.421
J2	2500140.057	38380812.589	J78	2488885.445	38379671.578	J154	2489936.488	38380664.564
J3	2500133.115	38380807.415	J79	2488892.509	38379885.659	J155	2500077.893	38380797.729
J4	2500126.422	38380801.544	J80	2488890.283	38379719.416	J156	2500096.413	38380817.994
J5	2500126.411	38380801.933	J81	2488888.944	38379730.628	J157	2500099.424	38380818.004
J6	2500119.991	38380796.165	J82	2488888.709	38379743.228	J158	2500106.877	38380824.71
J7	2500119.981	38380798.154	J83	2488887.983	38379763.342	J159	2500114.666	38380831.089
J8	2500101.688	38380778.938	J84	2488888.374	38379785.843	J160	2500122.733	38380837.259
J9	2489971.363	38380566.227	J85	2488889.182	38379779.333	J161	2500283.15	38380930.424
J10	2489971.385	38380566.227	J86	2488888.778	38379786.483	J162	2500290.491	38380948.016
J11	2489920.694	38380614.553	J87	2488887.682	38379789.584	J163	2500303.177	38380948.016
J12	2489920.616	38380614.325	J88	2488887.682	38379790.537	J164	2500305.693	38380939.576
J13	2489912.881	38380603.513	J89	2488887.809	38379807.640	J165	2500310.247	38380936.786
J14	2489912.739	38380603.411	J90	2488888.08	38379843.462	J166	2500312.685	38380934.564
J15	2489912.735	38380603.405	J91	2488888.178	38379856.415	J167	2489918.902	38379795.391
J16	2489906.482	38380598.932	J92	2488888.89	38379950.459	J168	2489906.892	38379795.543
J17	2489906.735	38380592.722	J93	2488888.908	38379952.92	J169	2489918.892	38379795.543
J18	2489898.888	38380587.844	J94	2488889.351	38380011.192	J170	2489918.892	38379795.543
J19	2489777.415	38380529.243	J95	2488889.454	38380024.81	J171	2489918.892	38379795.543
J20	2489771.354	38380484.293	J96	2488888.3	38380023.665	J172	2489918.892	38379795.543
J21	2489700.005	38380488.71	J97	2488889.064	38380023.543	J173	2489918.892	38379795.543
J22	2489688.347	38380483.803	J98	2488883.712	38380025.034	J174	2489918.892	38379795.543
J23	2489676.421	38380478.59	J99	2488883.335	38380028.74	J175	2489918.892	38379795.543
J24	2489664.288	38380476.086	J100	2488881.821	38380043.615	J176	2489918.892	38379795.543
J25	2489651.83	38380473.302	J101	2488881.428	38380059.396	J177	2489918.892	38379795.543
J26	2489557.283	38380454.858	J102	2488880.232	38380072.569	J178	2489918.892	38379795.543
J27	2489557.208	38380454.942	J103	2488888.857	38380077.834	J179	2489918.892	38379795.543
J28	2489557.208	38380454.85	J104	2488889.519	38380287.293	J180	2489918.892	38379795.543
J29	2489515.221	38380446.667	J105	2488882.132	38380378.202	J181	2489918.892	38379795.543
J30	2489515.128	38380446.640	J106	2488883.368	38380541.114	J182	2489918.892	38379795.543
J31	2489515.028	38380446.821	J107	2488904.004	38380544.618	J183	2489918.892	38379795.543
J32	2489412.094	38380426.56	J108	2488920.528	38380552.718	J184	2489918.892	38379795.543
J33	2489406.611	38380425.981	J109	2488928.524	38380558.98	J185	2489918.892	38379795.543
J34	2489398.557	38380408.75	J110	2488931.829	38380561.077	J186	2489918.892	38379795.543
J35	2489373.183	38380401.23	J111	2488933.333	38380562.586	J187	2489918.892	38379795.543
J36	2489354.605	38380415.384	J112	2488933.229	38380522.399	J188	2489918.892	38379795.543
J37	2489346.119	38380414.295	J113	2488932.452	38380419.862	J189	2489918.892	38379795.543
J38	2489154.985	38380376.456	J114	2488932.257	38380394.130	J190	2489918.892	38379795.543
J39	2488951.888	38380336.873	J115	2488932.179	38380381.922	J191	2489918.892	38379795.543
J40	2488946.455	38380336.208	J116	2488937.908	38380370.018	J192	2489918.892	38379795.543
J41	2488931.656	38380314.763	J117	2488950.051	38380367.086	J193	2489918.892	38379795.543
J42	2488928.486	38380309.457	J118	2488958.101	38380368.844	J194	2489918.892	38379795.543
J43	2488928.454	38380309.330	J119	2488958.039	38380368.411	J195	2489918.892	38379795.543
J44	2488928.408	38380307.896	J120	2488959.134	38380376.641	J196	2489918.892	38379795.543
J45	2488928.408	38380307.889	J121	2488943.478	38380385.283	J197	2489918.892	38379795.543
J46	2488928.407	38380307.799	J122	2488950.728	38380445.164	J198	2489918.892	38379795.543
J47	2488928.261	38379988.47	J123	2488954.789	38380445.956	J199	2489918.892	38379795.543
J48	2488928.838	38379942.587	J124	2488954.798	38380445.960	J200	2489918.892	38379795.543
J49	2488928.778	38379934.801	J125	2488954.6	38380445.967	J201	2489918.892	38379795.543
J50	2488928.252	38379865.131	J126	2488956.02	38380463.581	J202	2489918.892	38379795.543
J51	2488928.252	38379865.116	J127	2488956.527	38380472.328	J203	2489918.892	38379795.543
J52	2488928.25	38379864.826	J128	2488959.251	38380458.57	J204	2489918.892	38379795.543
J53	2488927.888	38379790.634	J129	2488944.1	38380457.515	J205	2489918.892	38379795.543
J54	2488927.854	38379767.58	J130	2488951.041	38380477.578	J206	2489918.892	38379795.543
J55	2488928.565	38379748.256	J131	2488951.229	38380477.619	J207	2489918.892	38379795.543
J56	2488928.675	38379745.189	J132	2488955.284	38380485.610	J208	2489918.892	38379795.543
J57	2488928.68	38379745.124	J133	2488956.478	38380485.654	J209	2489918.892	38379795.543
J58	2488928.701	38379744.541	J134	2488956.191	38380502.748	J210	2489918.892	38379795.543
J59	2488928.76	38379728.584	J135	2488956.808	38380505.144	J211	2489918.892	38379795.543
J60	2488930.158	38379722.502	J136	2488967.298	38380508.159	J212	2489918.892	38379795.543
J61	2488930.18	38379722.771	J137	2488975.599	38380572.893	J213	2489918.892	38379795.543
J62	2488930.229	38379721.537	J138	2488987.259	38380516.006	J214	2489918.892	38379795.543
J63	2488931.546	38379706.797	J139	2488987.325	38380520.611	J215	2489918.892	38379795.543
J64	2488931.840	38379704.659	J140	24889743.899	38380545.34	J216	2489918.892	38379795.543
J65	2488931.851	38379704.66	J141	24889746.598	38380546.879	J217	2489918.892	38379795.543
J66	2488932.435	38379698.588	J142	24889756.901	38380570.47	J218	2489918.892	38379795.543
J67	2488932.851	38379695.292	J143	24889779.203	38380581.243	J219	2489918.892	38379795.543
J68	2488932.857	38379695.247	J144	24889785.599	38380572.893	J220	2489918.892	38379795.543
J69	2488935.319	38379675.714	J145	2488980.074	38380575.171	J221	2489918.892	38379795.543
J70	2488938.878	38379652.936	J146	2488982.630	38380613.562	J222	2489918.892	38379795.543
J71	2488943.108	38379630.273	J147	2488988.301	38380618.447	J223	2489918.892	38379795.543
J72	2488943.777	38379627.184	J148	2488989.698	38380623.781	J224	2489918.892	38379795.543
J73	2488938.849	38379625.351	J149	2488989.777	38380629.577	J225	2489918.892	38379795.543
J74	2488927.484	38379620.358	J150	2488990.543	38380635.79	J226	2489918.892	38379795.543
J75	2488917.475	38379615.961	J151	24889912.883	38380642.421	J227	2489918.892	38379795.543
J76	2488915.131	38379621.457	J152	24889912.974	38380642.421	J228	2489918.892	38379795.543
J77	2488898.357	38379853.024				J229	2489918.892	38379795.543



湖南省地质工程勘察院有限公司
技术成果推广应用
书编号: 甲测资字 45666666

2498.80 2498.80
8379.60 8380.98